

# Application Note

**Chopper Type Switching Regulator IC**

**SI-8000FFE/FDE Series**

*Not Recommended for New Designs*

January 2010 Rev.2.0

**SANKEN ELECTRIC CO., LTD.**

— — — Content — — —

1. General Description		
1-1 Features	-----	4
1-2 Application	-----	4
1-3 Type	-----	4
2. Specification		
2-1 Package Information	-----	5 - 6
2-2 Ratings	-----	7
2-3 Circuit Diagram	-----	8
3. Operational Description		
3-1 PWM Output Voltage Control	-----	9
3-2 Overcurrent Protection / Thermal Shutdown	-----	10
4. Cautions		
4-1 External Components	-----	11 - 15
4-2 Pattern Design Notes	-----	16 - 17
4-3 Operation Waveform Check	-----	18
4-4 Power Supply Stability	-----	19 - 22
4-5 Thermal Design	-----	23 - 25
5. Applications		
5-1 Soft-start	-----	25 - 26
5-2 Output ON / OFF Control	-----	26
5-3 Spike Noise Reduction	-----	27
5-4 Reverse Bias Protection	-----	27
6. Typical Characteristics	-----	28 - 30
7. Terminology	-----	31

## 1. General Description

The SI-8001FFE/FDE is a chopper type switching regulator IC which is provided with various functions required for the buck switching regulator and protection functions. By using six external components, a highly efficient switching regulator can be composed. In addition, SI-8001FDE is a surface mounting (TO263-5) version of SI-8001FFE.

### ●1-1 Features

- Compact size and large output current of 3.5A
  - The maximum output current of 3.5 A for the outline of TO220F class
- High efficiency of 83% ( $V_{IN} = 15V/I_O = 2A$ )
  - Heat dissipation is small due to high efficiency to allow for the downsizing of a heat sink.
- Six external components
  - The regulator can be composed of input / output capacitor, diode, coil and resistors of  $V_{out}$  setting.
- Internal adjustment of output voltage and phase compensation having been done in production
  - Troublesome adjustment of output voltage and phase compensation by means of external components is no longer required.
- Reference oscillation by a built-in timing capacitor
  - No external capacitor for setting the oscillation frequency is required.
- Built-in functions for overcurrent and thermal shutdown
  - A current limiting type protection circuit against overcurrent and overheat is built in.  
(automatic restoration type)
- Soft start function (output ON/OFF is possible)
  - In addition of the external capacitor, it is possible to delay output voltage rise speed at the time of the start.
  - It is possible to control output "ON/OFF", too.
- No insulation plate required
  - No insulation plate is required, when it is fitted to the heat sink, because it is of full molding type.

### ●1-2 Applications

For on-board local power supplies, power supplies for OA equipment, stabilization of secondary output voltage of regulator and power supply for communication equipment

### ●1-3 Type

- Type: Semiconductor integrated circuits (monolithic IC)
- Structure: Resin molding type (transfer molding)

## 2. Specification

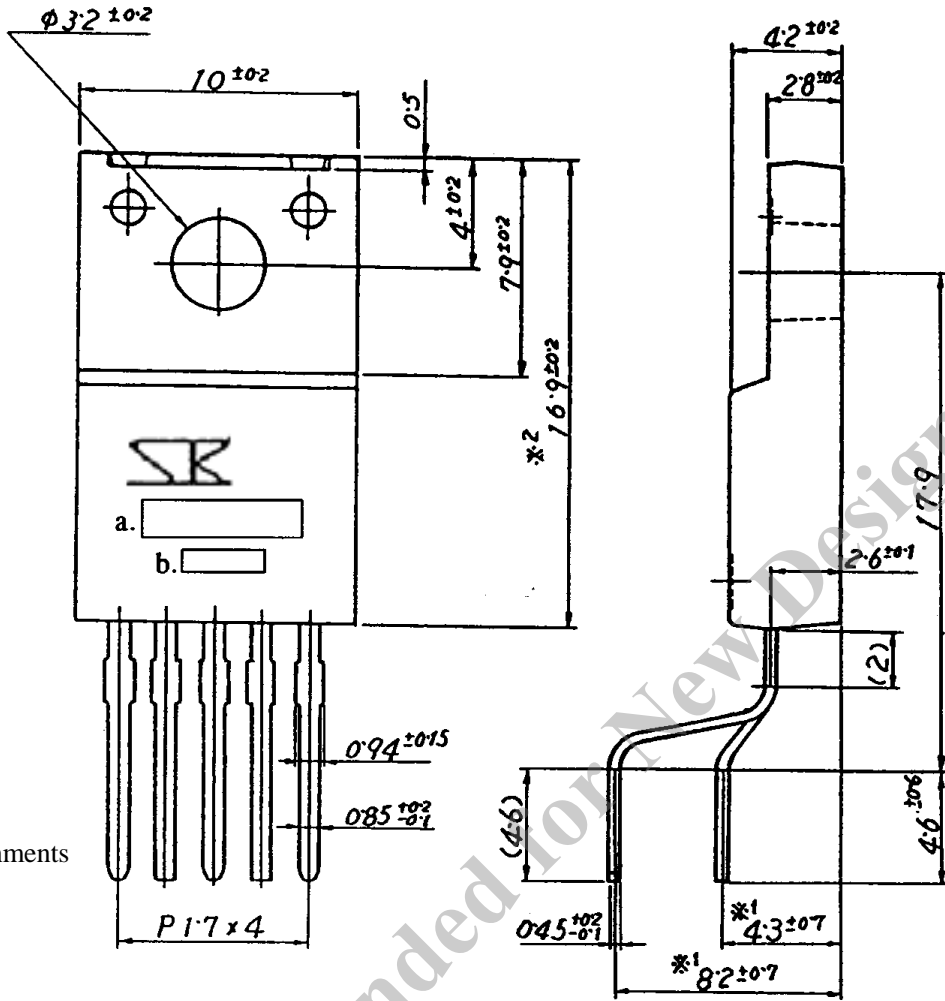
### ●2-1 Package Information of SI-8001FFE (lead forming No: LF1113)

Unit: mm

*Not Recommended for New Designs*

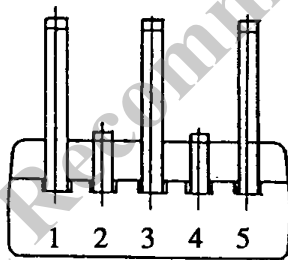
単位 : mm  
Dimensions in mm

Outline drawing of lead forming No.1113

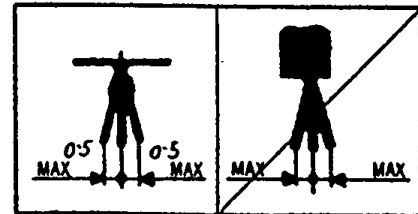


● Pin Assignments

- 1: IN
- 2: SW
- 3: GND
- 4: ADJ
- 5: SS



- a. Type Number
- b. Lot Number



- 1st letter The last digit of year
- 2nd letter Month  
(1 to 9 for Jan. to Sept.,  
O for Oct. N for Nov. D for Dec.)
- 3rd & 4th letter Day  
01~31  
Arabic Numerical

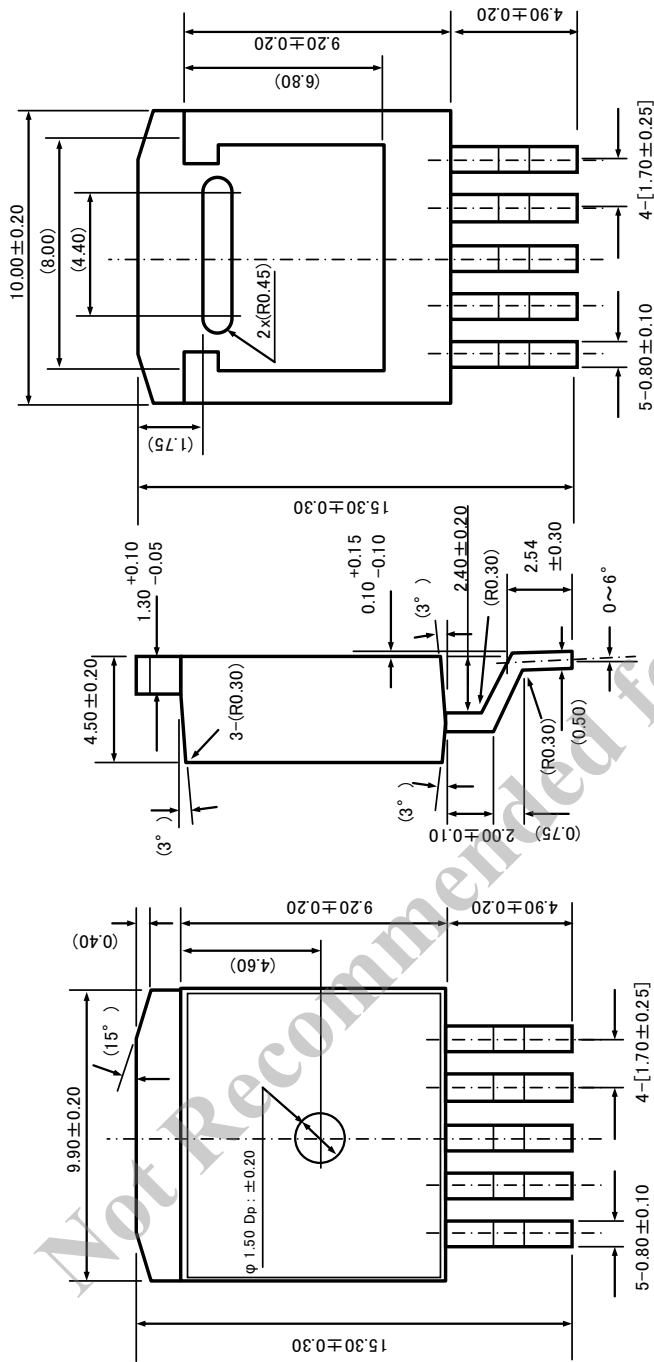
External terminal processing: Sn-3Ag-0.5Cu dip

The dimensions don't include the gate burr.

Shows the dimensions measured at the top of lead.

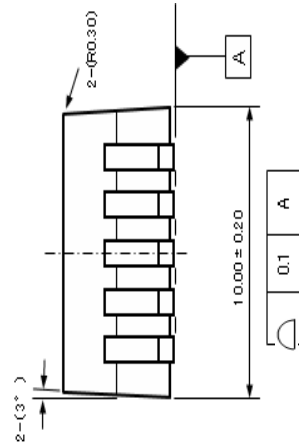
DWG.NO. TG3A-1113

●2-2 Package Information of SI-8001FDE (surface mount:TO263-5)



- Notes:
- 1) Dimensions do not include molding burr.
  - 2) Figures in parentheses ( ) are shown only for reference.
  - 3) Figures in parentheses [ ] are dimensions after lead forming.
  - 4) Backside bumps: 0.8 mm at maximum
  - 5) Unit: mm

- PIN assignments
1. IN
  2. SW
  3. GND
  4. ADJ
  5. SS



Products Weight: Approx.1.48g

## ●2-2 Ratings

### Absolute Maximum Ratings

Parameter	Symbol	Rating	Unit
Input Voltage	V <sub>IN</sub>	43 * <sub>1</sub>	V
Allowable Power Dissipation in Infinite Radiation	Pd1	18.2	W
Allowable Power Dissipation without Heat sink	Pd2	1.72	W
Junction Temperature	T <sub>jmax</sub>	150 * <sub>1</sub>	°C
Storage Temperature	T <sub>stg</sub>	-40 - +150	°C

SI-8001FDE is different only in allowable power dissipation.

\*1 Since the thermal shutdown is provided, it may be operated at T<sub>j</sub> > 130°C.

### Recommended Conditions

Parameter	Symbol	SI-8001FFE/FDE	Unit
DC Input Voltage	V <sub>IN</sub>	V <sub>O</sub> +3V - 40* <sub>2</sub>	V
Output Current	I <sub>O</sub>	0 - 3.5	A
Junction Temperature in Operation	T <sub>jop</sub>	-30 - +125	°C

\*2 V<sub>IN</sub> = 4.5V or V<sub>out</sub> +3V, whichever higher value is recommended.

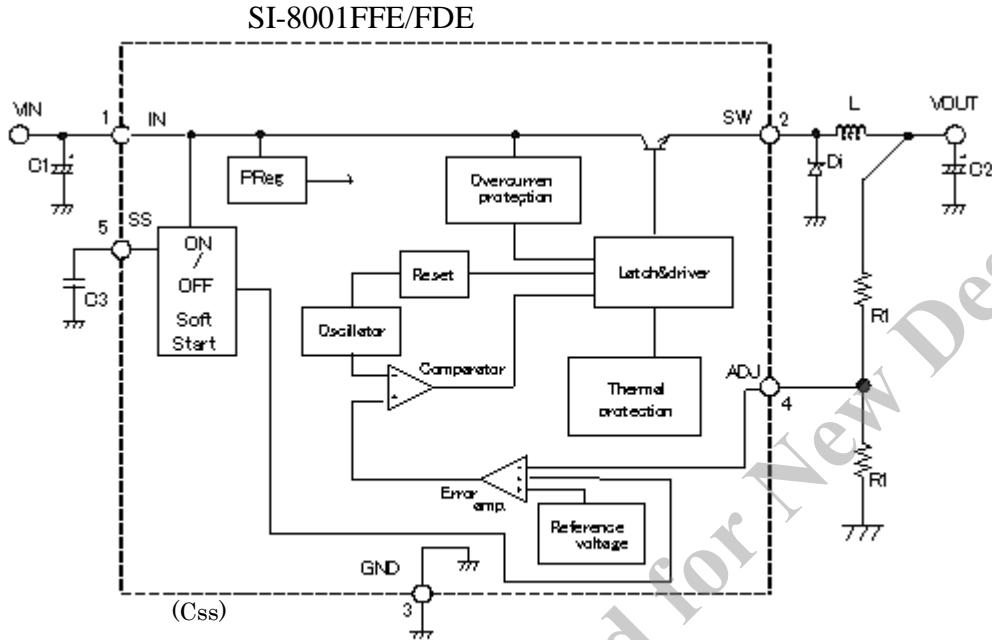
### Electrical Characteristics

(T<sub>a</sub>=25°C, V<sub>O</sub>=5V, R<sub>1</sub>=4.2kΩ, R<sub>2</sub>=0.8kΩ)

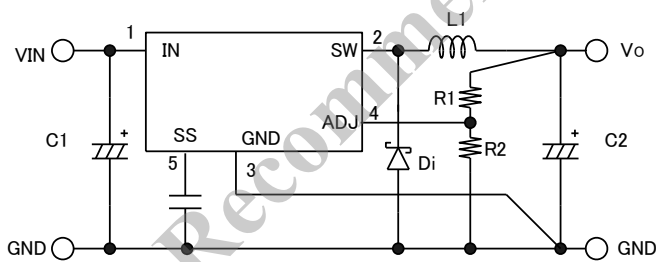
Parameter	Symbol	Limits			Unit	Test Conditions
		MIN	TYP	MAX		
Reference Voltage	V <sub>ADJ</sub>	0.784	0.800	0.816	V	V <sub>IN</sub> =15V, I <sub>O</sub> =0.2A
Reference Voltage Temperature Coefficient	$\Delta V_{ADJ}/\Delta T$		±0.1		mV/°C	V <sub>IN</sub> =15V, I <sub>O</sub> =0.2A, T <sub>c</sub> =0~100°C
Efficiency *3	η		83		%	V <sub>IN</sub> =15V, I <sub>O</sub> =2A
Operating Frequency	f <sub>o</sub>	270	300	330	kHz	V <sub>IN</sub> =15V, I <sub>O</sub> =2A
Line Regulation	V <sub>Line</sub>		55	80	mV	V <sub>IN</sub> =10 - 30V, I <sub>O</sub> =2A
Load Regulation	V <sub>Load</sub>		15	50	mV	V <sub>IN</sub> =15V, I <sub>O</sub> =0.2 - 3.5A
Overcurrent Defection	I <sub>s</sub>	3.6			A	V <sub>IN</sub> =15V
ON/OFF Terminal*4	Low Level Voltage Threshold	V <sub>SSL</sub>		0.5	V	
	Leakage Current in Low Voltage Threshold	I <sub>SSL</sub>	6	30	μA	V <sub>IN</sub> =15V, V <sub>SS</sub> =0V
Quiescent Current 1	I <sub>q</sub>		6		mA	V <sub>IN</sub> =15V, I <sub>O</sub> =0A
Quiescent Current 2	I <sub>q</sub> (off)		200	600	μA	V <sub>IN</sub> =15V V <sub>SS</sub> =0V

**2-3 Circuit Diagram**

**2-3-1 Internal Equivalent Circuit**



**2-3-2 Typical Connection Diagram**



C1: 470 $\mu$ F

C2: 680 $\mu$ F

C3: around 0.1 $\mu$ F

(C3 is necessary when soft-start function is used)

L1: 47 $\mu$ H

Di: RK46 (Sanken)

SPB-G56S is recommended for surface mount

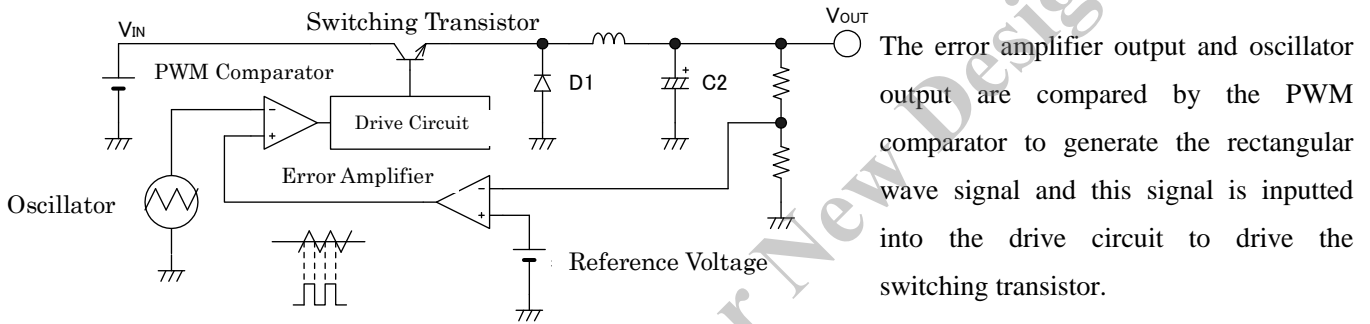


# 3. Operational Description

## ●3-1 PWM Output Voltage Control

SI-8000F series controls the output voltage by the PWM system and comprises PWM comparator, oscillator, error amplifier, reference voltage, output transistor drive circuit etc. For the input of the PWM comparator, the triangular wave output ( $\approx 300\text{KHz}$ ) from the oscillator and the output of the error amplifier are given. The PWM comparator compares the oscillator output with the error amplifier output to control to turn on the switching transistor at the time when the error amplifier exceeds the error amplifier output.

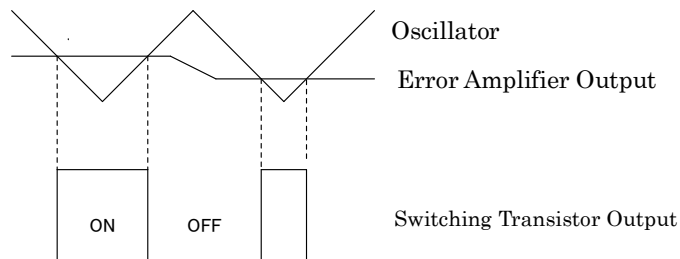
PWM Control Chopper Type Regulator Basic Configuration



On the assumption that the output voltage commences to rise, the output of the error amplifier will drop, because the error amplifier is of inverting type. As the output of the error amplifier falls down, the time period during which it falls below the triangular wave level of the oscillator is increased to shorten the ON time of the switching transistor and as a result, the output voltage is maintained at a certain level. As described above, the output voltage is controlled by varying the ON time of the switching transistor, while fixing the switching frequency.

(the higher is  $V_{in}$ , the larger is the ON time of the switching transistor.)

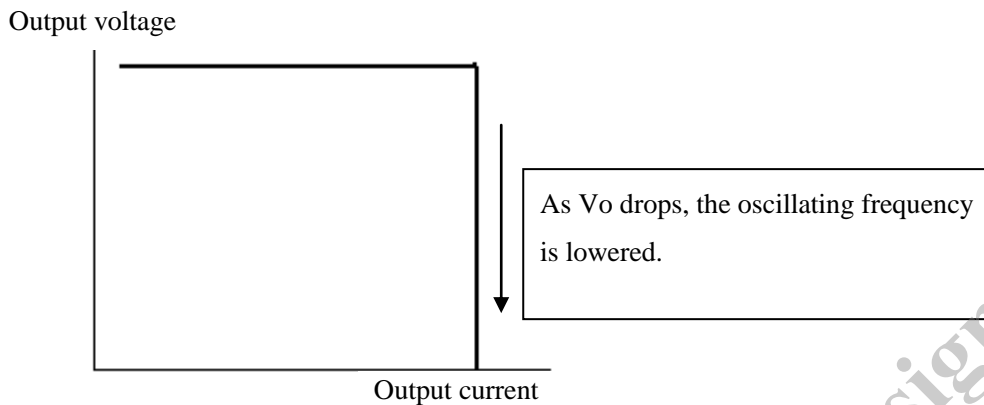
PWM Comparator Operation



The rectangular wave output of the switching transistor is smoothed by the LC low pass filter of a choke coil and capacitor to supply stabilized DC voltage to the load.

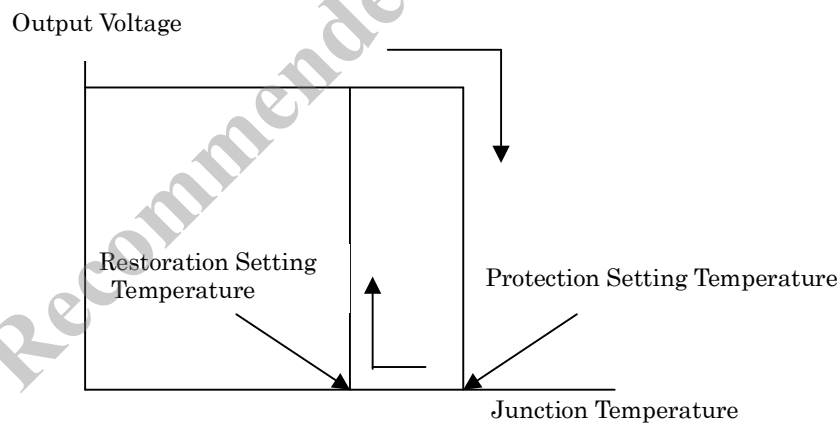
### ●3-2 Overcurrent Protection / Thermal Shutdown

Output Voltage Characteristics in Overcurrent



The SI-8000Fseries incorporates a current limiting type overcurrent protection circuit. The overcurrent protection circuit detects the peak current of a switching transistor and when the peak current exceeds the set value, the ON time of the transistor is compulsorily shortened to limit the current by lowering the output voltage. In addition, when the output voltage is lowered, the increase of current at low output voltage is prevented by dropping linearly the switching frequency to about 25 KHz. When the overcurrent condition is released, the output voltage will be automatically restored.

Output Voltage Characteristics in Thermal Shutdown



The thermal shutdown circuit detects the semiconductor junction temperature of the IC and when the junction temperature exceeds the set value (around 150°C), the output transistor is stopped and the output is turned OFF. When the junction temperature drops from the set value for overheat protection by around 15°C, the output transistor is automatically restored.

\* Note for thermal shutdown characteristic

This circuit protects the IC against overheat resulting from the instantaneous short circuit, but it should be noted that this function does not assure the operation including reliability in the state that overheat continues due to long time short circuit.

## 4. Cautions

### ●4-1 External Components

#### 4-1-1 Choke coil L1

The choke coil L1 plays a main role in the chopper type switching regulator. In order to maintain the stable operation of the regulator, such dangerous state of operation as saturation state and operation at high temperature due to heat generation must be avoided.

The following points should be taken into consideration for the selection of the choke coil.

a) The choke coil should be fit for the switching regulator.

The coil for a noise filter should not be used because of large loss and generated heat.

b) The inductance value should be appropriate.

The larger is the inductance of the choke coil, the less is the ripple current flowing across the choke coil, and the output ripple voltage drops and as a result, the overall size of the coil becomes larger.

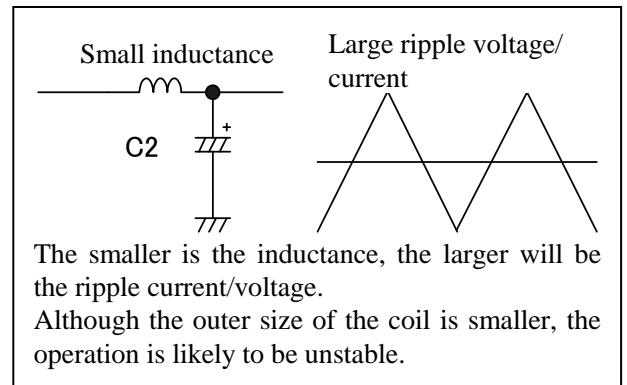
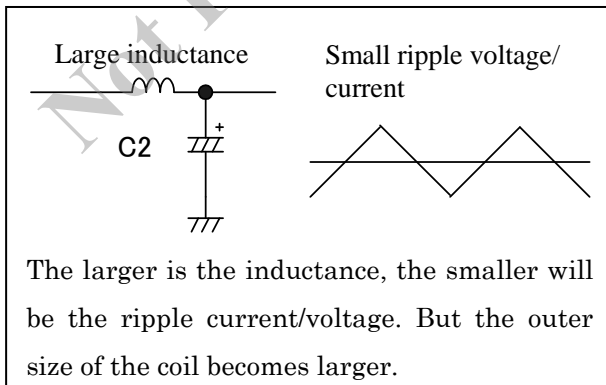
On the other hand, if the inductance is small, the peak current flowing across the switching transistor and diode is increased to make the ripple voltage higher and this operation state is not favorable for maintaining the stable operation.

When the ripple voltage of the output voltage becomes too high, the operation is likely to be unstable and waveform skipping or jitter may be generated.

It is recommended that the ripple voltage of the output voltage should be 1% or less of the set output voltage.

The ripple voltage of the output voltage is determined as the product of  $\Delta I L$  and ESR (equivalent series resistance) of the output capacitor, therefore when the ESR is too large, a problem may happen. The ESR should also be taken into account as well as the selection of the output capacitor.

$$V_{out\ ripple} = \Delta I L \times ESR \text{ of output capacitor}$$



The inductance value shown in the specifications should be considered as a reference value for the stable operation and the appropriate inductance value can be obtained by the equation (1).

However, it should be noted that the ripple value should also be adjusted to be appropriate.

$\Delta I_L$  shows the ripple current value of the choke coil and the lower limit of inductance is set as described in the following.

- In the case that the output current to be used is nearly equal to the maximum rating (3.5A) of the SI-8000F: output current  $\times 0.1$  or so
- In the case that the output current to be used is approximately 2A or less: output current  $\times 0.3 - 0.4$

$$L1 = \frac{(V_{IN} - V_{OUT}) \cdot V_{OUT}}{\Delta I_L \cdot V_{IN} \cdot f} \quad \text{--- (1)}$$

For example, where  $V_{IN} = 25V$ ,  $V_{OUT} = 5V$ ,  $\Delta I_L = 0.5A$ , frequency = 300 KHZ,

$$L1 = \frac{(25 - 5) \times 5}{0.5 \times 25 \times 300 \times 10^3} \doteq 26.7 \mu H$$

As shown above, the coil of about 27 $\mu$ H may be selected.

However, it is to be noted that the peak current of the switching transistor is increased depending on the calculated inductance value.

Therefore, the peak current detection system is adopted for overcurrent detection and in this case, the overcurrent detection point may become lower.

c) The rated current shall be met.

The rated current of the choke coil must be higher than the maximum load current to be used. When the load current exceeds the rated current of the coil, the inductance is sharply decreased to the extent that it causes saturation state at last. Please note that overcurrent may flow since the high frequency impedance becomes low.

d) Noise shall be low.

In the open magnetic circuit core which is of drum shape, since magnetic flux passes outside the coil, the peripheral circuit may be damaged by noise. It is recommended to use the toroidal type, EI type or EE type coil which has a closed magnetic circuit type core as much as possible.

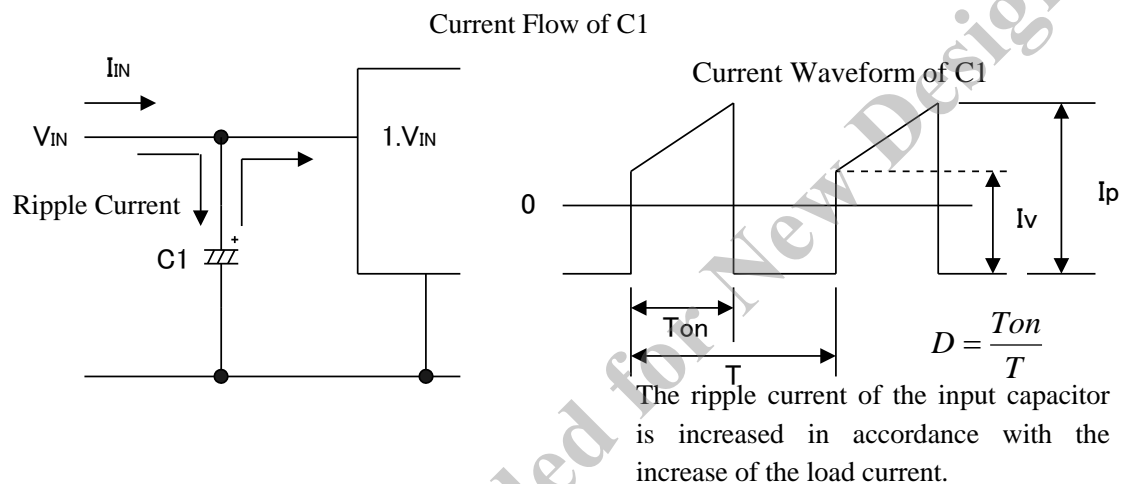
### 4-1-2 Input Capacitor C1

The input capacitor is operated as a bypass capacitor of the input circuit to supply steep current to the regulator during switching and to compensate the voltage drop of the input side. Therefore, the input capacitor should be placed as close as to the regulator IC.

Even in the case that the rectifying capacitor of the AC rectifier circuit is located in the input circuit, the input capacitor cannot play a role of the rectifying capacitor unless it is placed near the SI-8000F.

The selection of C1 shall be made in consideration of the following points:

- The requirement of withstand voltage shall be met.
- The requirement of the allowable ripple voltage shall be met.



If the withstanding voltages or allowable ripple voltages are exceeded or used without derating, it is in danger of causing not only the decreasing the capacitor lifetime (burst, capacitance decrease, equivalent impedance increase, etc) but also the abnormal oscillations of regulator.

Therefore, the selection with sufficient margin is needed.

The effective value of ripple current flowing across the input capacitor can be obtained by the following equation (2):

$$I_{rms} \approx 1.2 \times \frac{V_o}{V_{in}} \times I_o \quad \text{--- (2)}$$

For instance, where  $V_{IN} = 20V$ ,  $I_o = 3A$  and  $V_o = 5V$ ,

$$I_{rms} \approx 1.2 \times \frac{5}{20} \times 3 = 0.9A$$

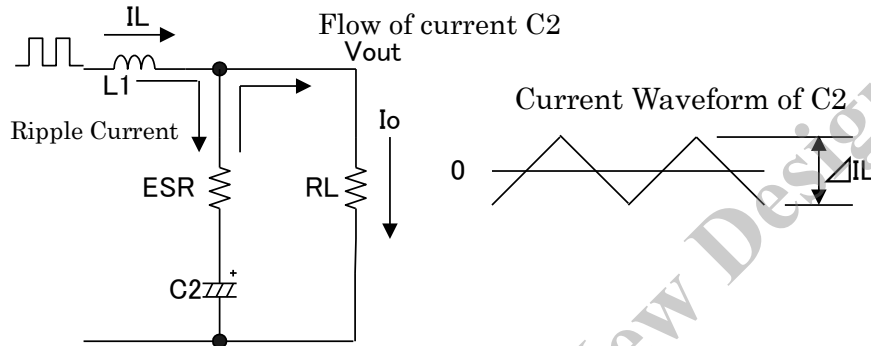
Therefore, it is necessary to select the capacitor with the allowable ripple current of 0.9A or higher.

### 4-1-3 Output Capacitor C2

The output capacitor C2 composes a LC low pass filter together with a choke coil L1 and functions as a rectifying capacitor of switching output.

The current equivalent to the pulse current  $\Delta I_L$  of the choke coil current is charged and discharged in the output capacitor.

Therefore, it is necessary to meet the requirements of withstand voltage and allowable ripple current with sufficient margin like the input capacitor.



The ripple current of the output capacitor is equal to the ripple current of the choke coil and does not vary even if the load current increases or decreases.

The ripple current effective value of the output capacitor is obtained by the equation (3).

$$I_{rms} = \frac{\Delta I_L}{2\sqrt{3}} \quad \text{--- (3)}$$

When  $\Delta I_L = 0.5A$ ,

$$I_{rms} = \frac{0.5}{2\sqrt{3}} \doteq 0.14A$$

Therefore a capacitor having the allowable ripple current of 0.14A or higher is required.

In addition, the output ripple voltage  $V_{rip}$  of the regulator is determined by a product of the pulse current  $\Delta I_L$  of the choke coil current (= C2 charging/discharging current) and the equivalent series resistance ESR of the output capacitor.

$$V_{rip} = \Delta I_L \cdot C2ESR \quad \text{--- (4)}$$

It is therefore necessary to select a capacitor with low equivalent series resistance ESR in order to lower the output ripple voltage. As for general electrolytic capacitors of same product series, the ESR shall be lower, for the products of higher capacitance with same withstand voltage, or with higher withstand voltage (almost proportional to larger externals) with same capacitance.

When  $\Delta I_L = 0.5A$ ,  $V_{rip} = 40mV$ ,

$$C2esr = 40 \div 0.5 = 80m\Omega$$

As shown above, a capacitor with the ESR of 80mΩ or lower should be selected. In addition, since the ESR varies with temperature and increases at low temperature, it is required to examine the ESR at the actual operating temperatures. It is recommended to contact capacitor manufacturers for the ESR value since it is peculiar to capacitors.

However, if the ESR of the output capacitor is too low (10 - 30mΩ or lower), the phase margin within the feedback loop of the regulator will be short to make the operation unstable. Therefore, it is not appropriate that a tantalum capacitor or a laminated ceramic capacitor is used for the output capacitor as an independent component. However, connecting a tantalum capacitor or a laminated ceramic capacitor in parallel with an electrolytic capacitor is effective in reducing the output ripple voltage only when it is used at low temperature (< 0°C).

#### **4-1-4 The flywheel Diode D1**

The flywheel diode D1 is to discharge the energy which is stored in the choke coil at switching OFF.

For the flywheel diode, the Schottky barrier diode must be used. If a general rectifying diode or fast recovery diode is used, the IC may be destroyed by applying reverse voltage due to the recovery and ON voltage.

In addition, since the output voltage from the SW terminal (pin 2) of the SI-8000F series is almost equivalent to the input voltage, the flywheel diode with the reverse withstand voltage of the input voltage or higher should be used.

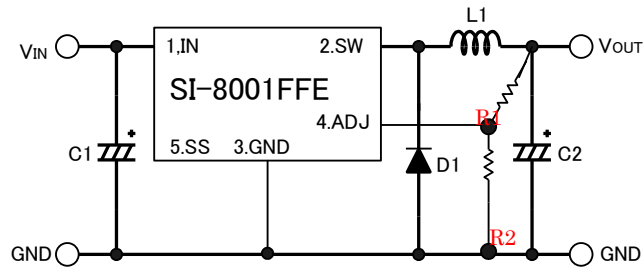
It is recommended not use the ferrite bead for the flywheel diode.

Not Recommended for New Designs

## ●4-2 Pattern Design Notes

### 4-2-1 High Current Line

Since high current flows in the bold lines in the connection diagram, the pattern should be as wide and short as possible.

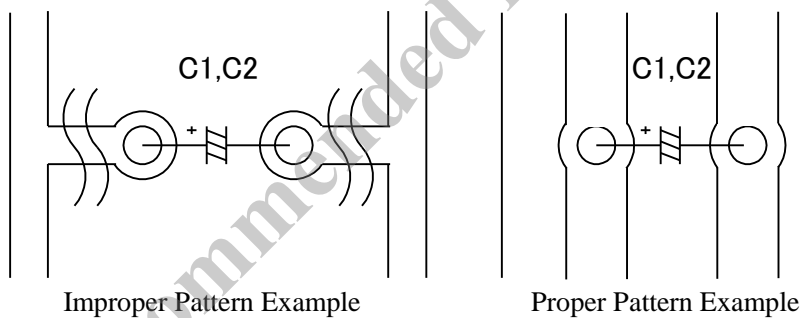


### 4-2-2 Input / Output Capacitor

The input capacitor C1 and the output capacitor C2 should be placed to the IC as close as possible. If the rectifying capacitor for AC rectifier circuit is on the input side, it can be used as an input capacitor. However, if it is not close to the IC, the input capacitor should be connected in addition to the rectifying capacitor.

Since high current is discharged and charged through the leads of input/output capacitor at high speed, the leads should be as short as possible.

A similar care should be taken for the patterning of the capacitor.





#### 4-2-3 ADJ Terminal (Output Voltage Set-up)

The ADJ terminal is a feedback detection terminal for controlling the output voltage. It is recommended to connect it as close as possible to the output capacitor C2. When they are not close, the abnormal oscillation may be caused due to the poor regulation and increase of switching ripple. The output voltage set-up is achieved by connecting R1 and R2. (The  $I_{ADJ}$  lower limit is 0.8mA, and the upper limit is not defined. However, it is necessary to consider that the consumption current shall increase according to the  $I_{ADJ}$  value, resulting in lower efficiency.)

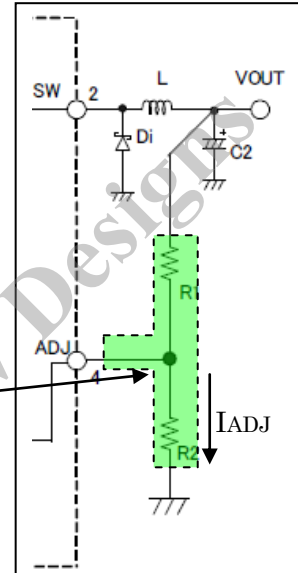
R1, R2 and output voltage are calculated from the following equations:

$$I_{ADJ} = V_{ADJ} / R2 \quad *V_{ADJ} = 0.8V \pm 2\%$$

$$R1 = (V_o - V_{ADJ}) / I_{ADJ} \quad R2 = V_{ADJ} / I_{ADJ}$$

$$V_{out} = R1 \times (V_{ADJ} / R2) + V_{ADJ}$$

The layout of voltage detection line should be made in compact form for stable operation in order to avoid the effect of switching noise.



R2 should be connected for the stable operation when set to  $V_o = 0.8V$ .

It is recommended to set the output voltage to 8% or higher of the input voltage.

Constants and variation range are shown in the following table in the case that the output voltage is set for the output voltage setting resistors R1 and R2 by the resistance constants of existing accuracy of 1% and 0.5%.

Table of constants for R1/R2  $V_o$  setting

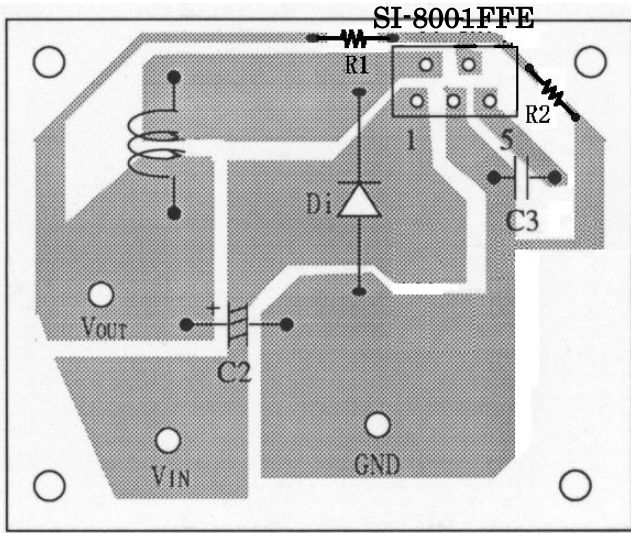
Target Vout (V)	Resistance Constants of Accuracy of 1%			Resistance Constants of Accuracy of 0.5%		
	R1 (Ω)	R2 (Ω)	Calculated Accuracy (%)	R1 (Ω)	R2 (Ω)	Calculated Accuracy (%)
1.2	402	806	+2.61	402	806	+2.26
			-2.73			-2.41
1.8	1000	806	+2.72	1010	806	+2.72
			-3.48			-2.41
2.5	1690	787	+4.15	1690	796	+2.64
			-2.64			-2.73
3.3	2490	806	+2.67	2490	796	+2.86
			-4.31			-2.67
5	4220	806	+3.50	4170	796	+2.68
			-3.85			-3.00
9	8250	806	+3.75	8160	796	+2.95
			-3.89			-2.88
12	11000	787	+3.77	11100	796	+2.58
			-3.96			-3.27
24	23200	806	+3.25	23400	806	+3.11
			-4.57			-2.84

The wiring of ADJ terminal, R1 and R2 that run parallel to the flywheel diode should be avoided, because

switching noise may interfere with the detection voltage to cause abnormal oscillation. It is recommended to implement the wiring from the ADJ terminal to R2 as short as possible.

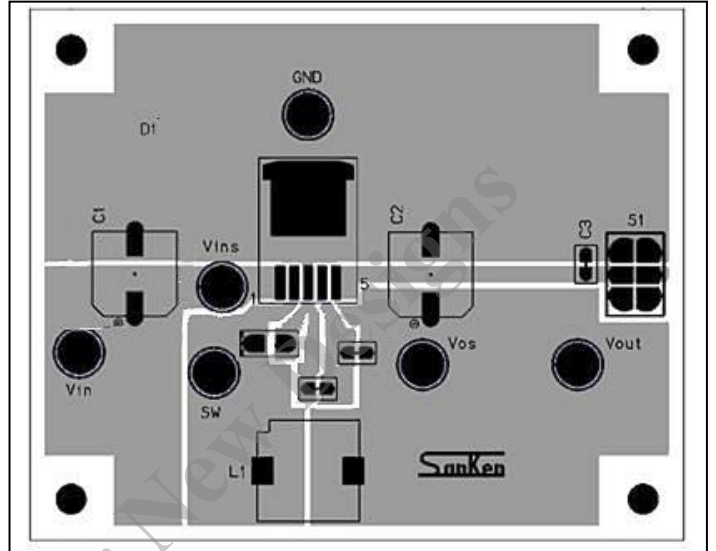
Mounting Board Pattern Example

Lead Insertion Type (SI-8001FFE)



(top view • silk printing side)

Surface Mount Type (SI-8001FD)



Top view: component side

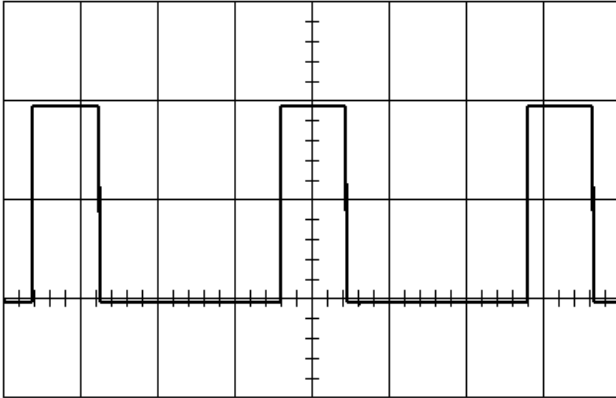
Not Recommended for New Designs

### ●4-3 Operation Waveform Check

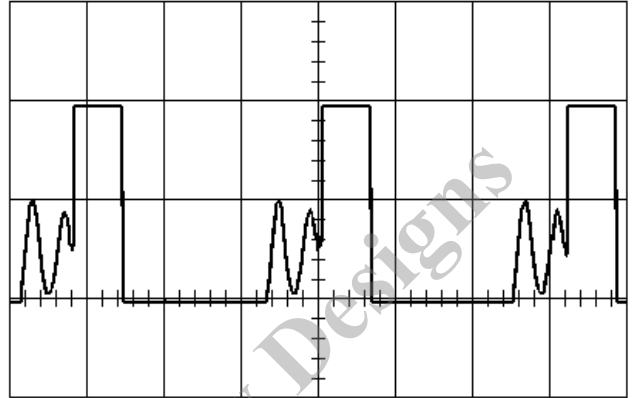
It can be checked by the waveform between the pin 2 and 3 (SW - GND) of the SI-8000F whether the switching operation is normal or not.

The examples of waveforms at normal and abnormal operations are shown below:

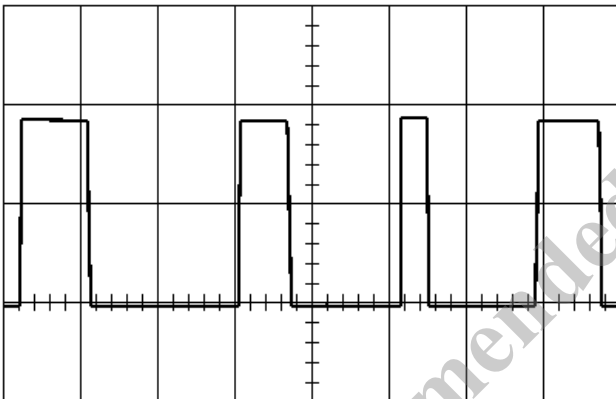
1. Normal Operation (continuous area)



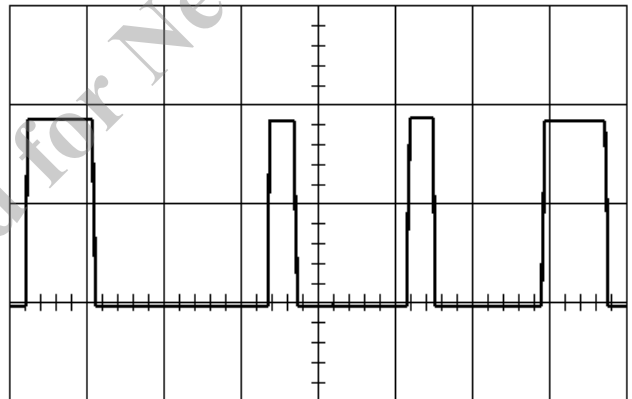
2. Normal Operation (discontinuous area)



3. When C1 and C4 is distant from IC



4. When C2 is distant from IC



The continuous area is an area where the DC component of the triangular wave is superimposed on the current flowing across the choke coil and the discontinuous area is an area where the current flowing across the choke coil is intermittent (a period of zero current may happen.) because the current flowing across the choke coil is low.

Therefore, when the load current is high, the area is a continuous area and when the same current is low, the area is a discontinuous area.

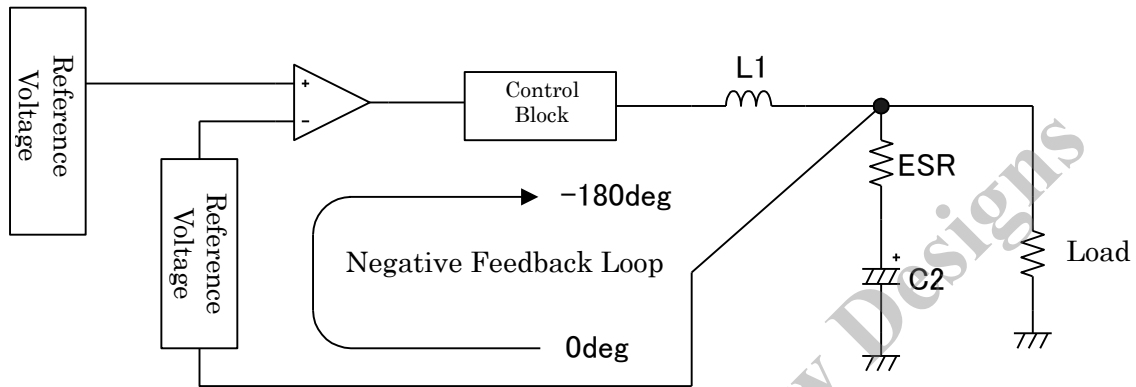
In the continuous area, the switching waveform is formed in the normal rectangular waveform (waveform 1) and in the discontinuous area, damped oscillation is caused in the switching waveform (waveform 2), but this is a normal operation without any problem.

In the meantime, when the IC is far from C1 and C2, jitter which disturbs the ON - OFF time of switching will happen; as shown in the waveforms (3, 4). As described above, C1 and C2 should be connected close to the IC.

## ●4-4 Power Supply Stability

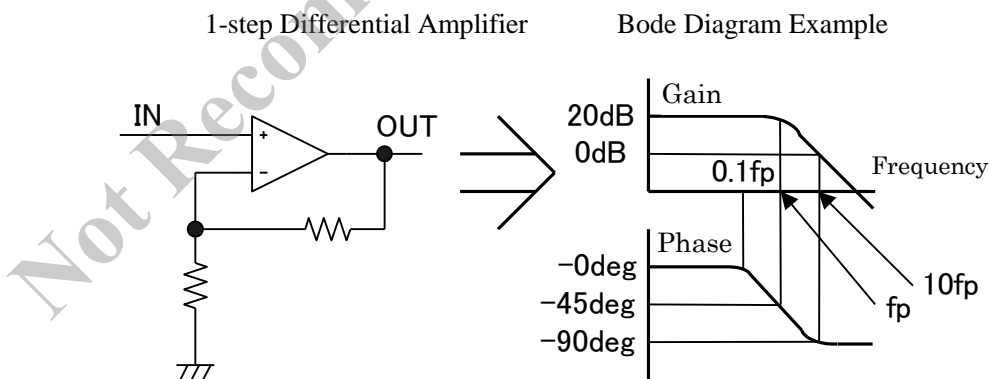
### 4-4-1 Phase Margin

This block diagram shows that the chopper type regulator is a negative feedback amplifier which controls the output voltage by constantly comparing with the output voltage and the reference voltage which is set in advance. Therefore, it has a negative feedback loop to control the output by detecting the variation of output voltage with the error amplifier.



The phase within the negative feedback loop is displaced by  $180^\circ$  to negate the variation of the output voltage, but in the event that the phase is further delayed by  $180^\circ$  in the state that the amplification degree (gain) is 1 or more, the total phase delay amounts to  $360^\circ$  to deviate from the stable operation zone to cause abnormal oscillation. This is called Barkhausen oscillation conditions. Therefore, the oscillation conditions should not be accrued in the actual stabilized power supply.

It is possible to judge whether the Barkhausen oscillation conditions are accrued or not by means of frequency and gain/phase characteristics of the negative feedback loop. The frequency-gain/phase characteristics are called Bode diagram.

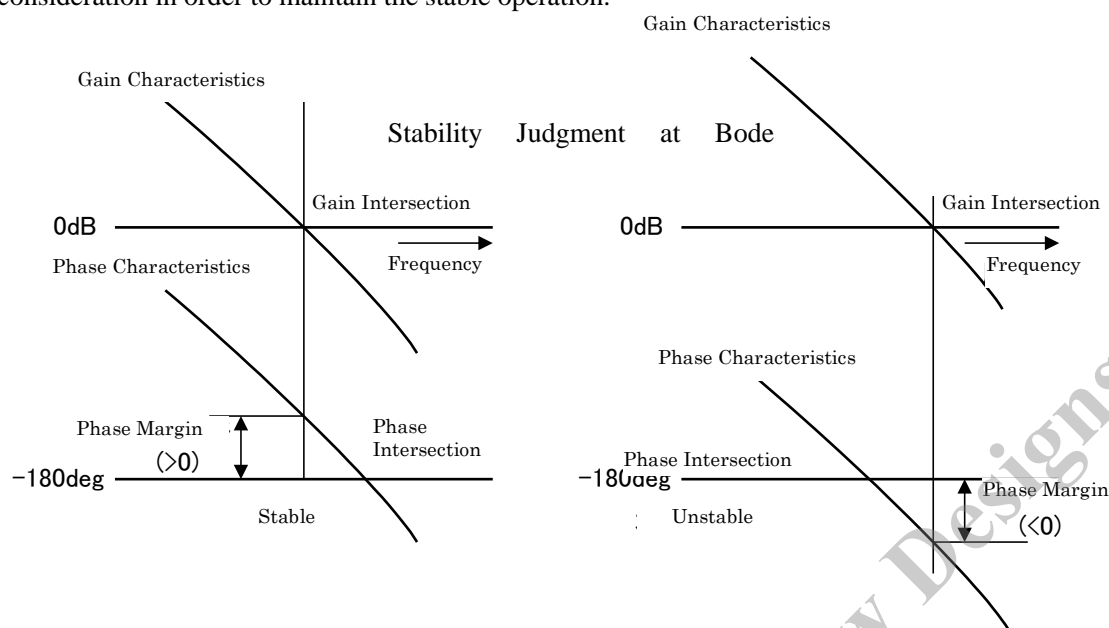


In the Bode diagram, the frequency at which the gain is 1 (0 dB) is called gain intersection and the frequency at which the phase of feedback loop is  $-180^\circ$  is called phase intersection.

Unless the phase reaches  $-180^\circ$  at the frequency of gain intersection, the oscillation conditions are not met.

In this respect, the phase at gain intersection - ( $-180^\circ$ ) is equal to the phase at gain intersection +  $180^\circ$  and this value is used as a margin to  $-180^\circ$  which is called phase margin. The more the phase margin is, the less likely the abnormal oscillation is to occur against the variation of environmental conditions such as

input/output conditions and temperature. Therefore, sufficient phase margin should be taken into consideration in order to maintain the stable operation.



#### **4-4-2 Phase Characteristics of Regulator IC**

The phase characteristics of the chopper type regulator are synthesized by the phase characteristics inside the regulator IC and that of the LC filter.

The phase characteristics inside the regulator IC are generally determined by the delay time of the control block and the phase characteristic of the output error amplifier.

Among these two factors, the phase delay due to the delay time of the control block rarely causes problems in actual use. Therefore, the phase characteristics of the error amplifier are important.

With respect to the compensation of phase characteristics of the output error amplifier, there are two types of regulator ICs. One is that compensation is made in the IC in advance, while another type is that external components such as resistors and capacitors are added to the IC for compensation.

In the former case, it is only a matter of selection of the LC filter, but in the latter case, appropriate phase compensation should be made in accordance with the application of the product.

#### **4-4-3 Phase Characteristics of LC Filter**

The phase margin of the chopper type regulator depends largely on the phase characteristics of the LC filter for output smoothing. The phase characteristic of the LC filter theoretically shows the characteristics of a secondary delay factor. Resonance is caused at a specific frequency due to the combination of inductance  $L_1$  of coil and of capacitance  $C_2$  of the capacitor and at frequency higher than the resonance point, the phase is delayed by  $180^\circ$  at a maximum.

The resonance frequency is expressed as shown in the equation (5):

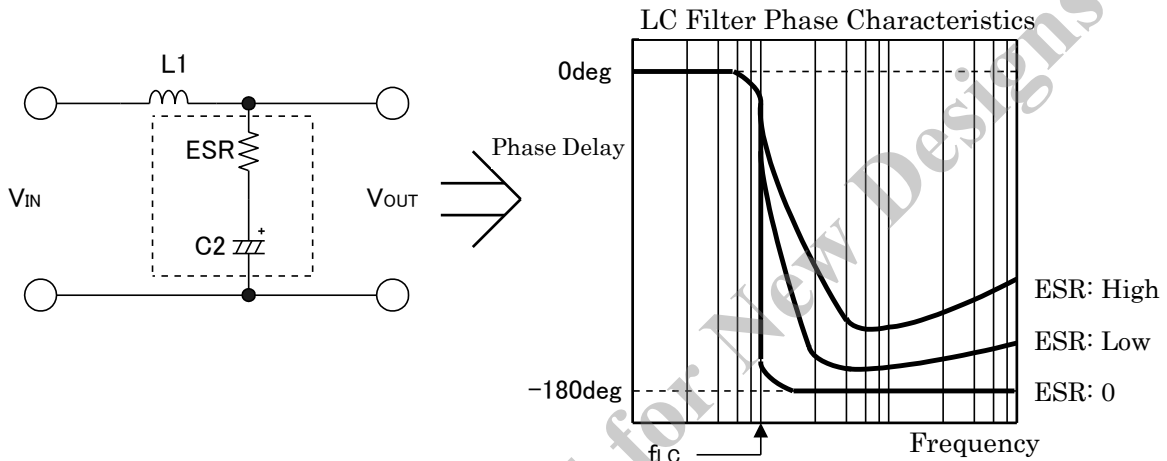
$$f_{LC} = \frac{1}{2\pi\sqrt{LC}} \quad \text{--- (5)}$$

The phase characteristics are  $0^\circ$  if they are lower than the resonance frequency  $f_{LC}$ .

The phase characteristics are  $180^\circ$  if they are higher than the resonance frequency  $f_{LC}$ .

Accordingly, when the LC filter for output smoothing shows the theoretical phase characteristics, the phase delay reaches  $-180^\circ$  in this filter portion and the phase margin will be zero for this regulator.

However, in the actual LC filter, the phase delay of the LC filter is less than  $180^\circ$  because of influence of the equivalent series resistance (ESR) of capacitor. Consequently, the phase margin can be secured for the regulator because of this phase compensation effect of the equivalent series resistance (ESR).



Generally speaking, when such capacitors as tantalum capacitors or laminated capacitors are used for the output LC filter, the phase delay of filters will be large.

Therefore, from the view point of securing the phase margin, use of the electrolytic capacitor is preferable.

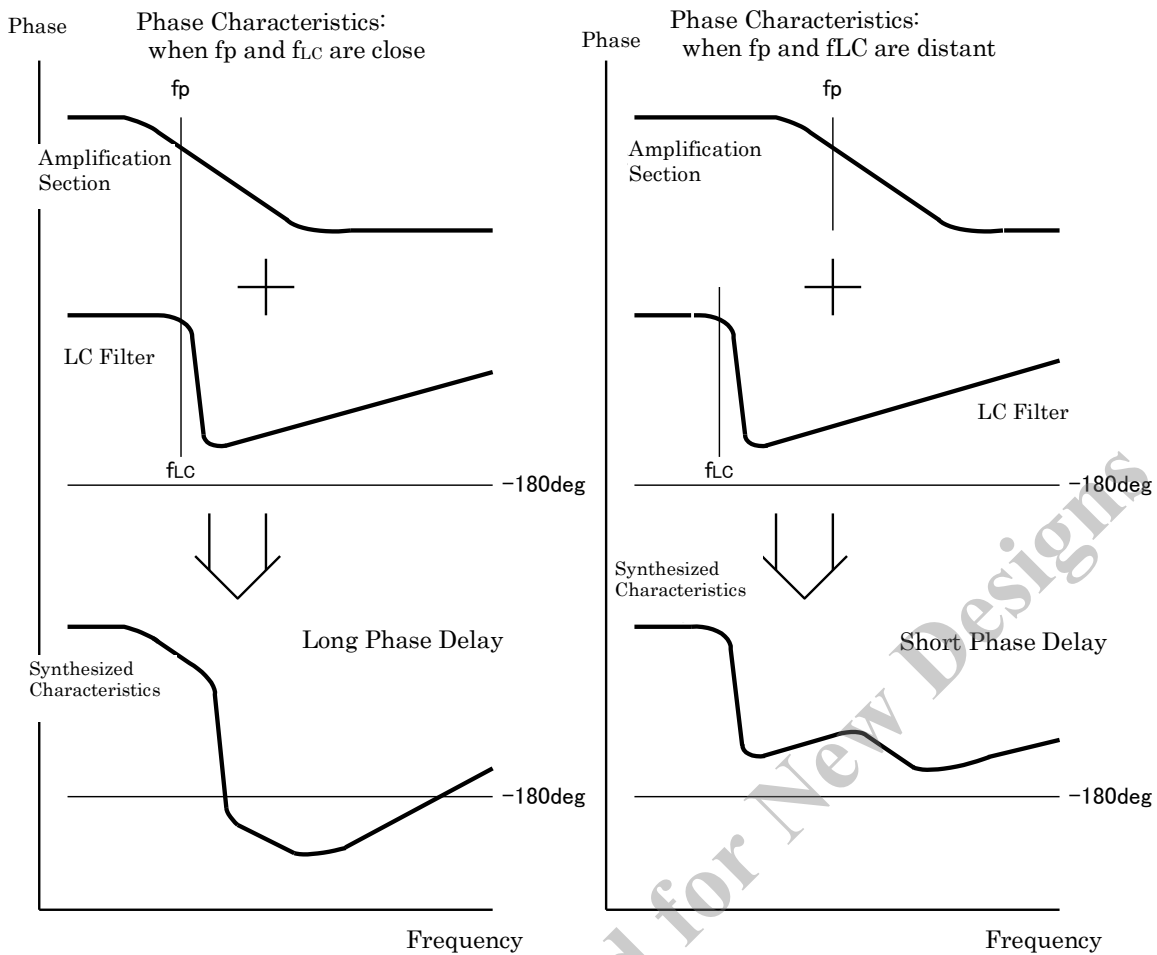
#### **4-4-4 Relation of Phase Characteristics of Internal IC and LC Filter**

As described above, the phase characteristics of the chopper type regulator is almost determined by the phase characteristics of the error amplifier and LC filter. In this respect, the relation between these two characteristics is important.

When the gain lowering commencement frequency of the error amplifier, namely the first pole frequency  $f_p$  and the resonant frequency of the LC filter  $f_{LC}$  are closer, the phase margin of the regulator is decreased because of concentrated phase delay. In this respect, the proper distribution of  $f_p$  and  $f_{LC}$  is important.

Normally, the phase delay of error amplifier commences from 0.1 times of the first pole frequency  $f_p$ .

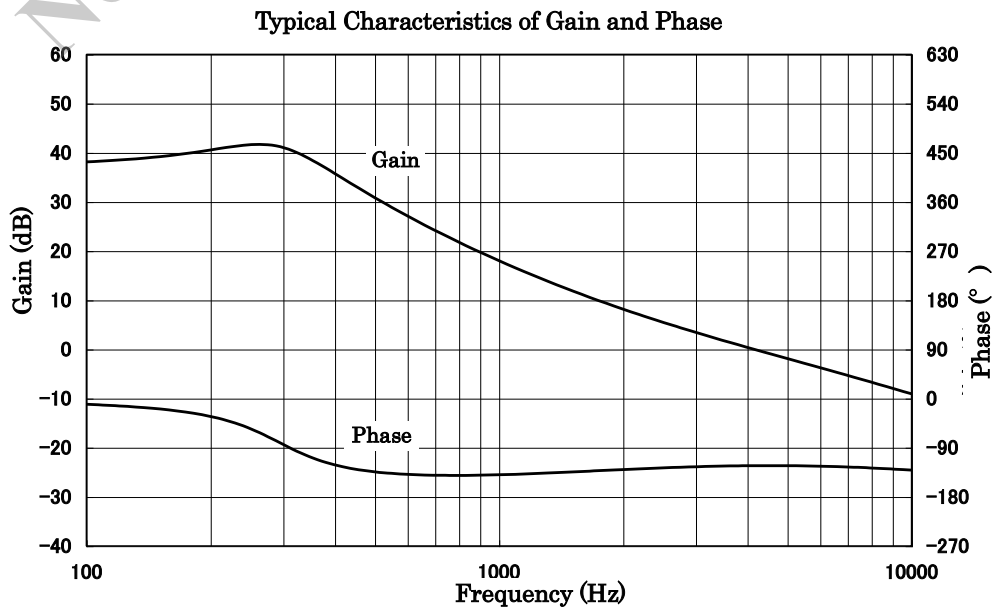
In order to avoid the concentration of phase delay, the resonant frequency of the LC filter  $f_{LC}$  should be kept to be less than 0.1 times of the first pole frequency  $f_p$  of the error amplifier.



Generally, the frequency  $f_p$  of the chopper type regulator IC is set from several KHz to higher than ten KHz.

With respect to the constants of LC filters described in the applications of each regulator IC, if the inductance of coil or capacitance of the capacitor is set to be less than the recommended values, the resonant frequency  $f_{LC}$  of the LC filter may rise to decrease the phase margin. Care should be taken to this phenomenon.

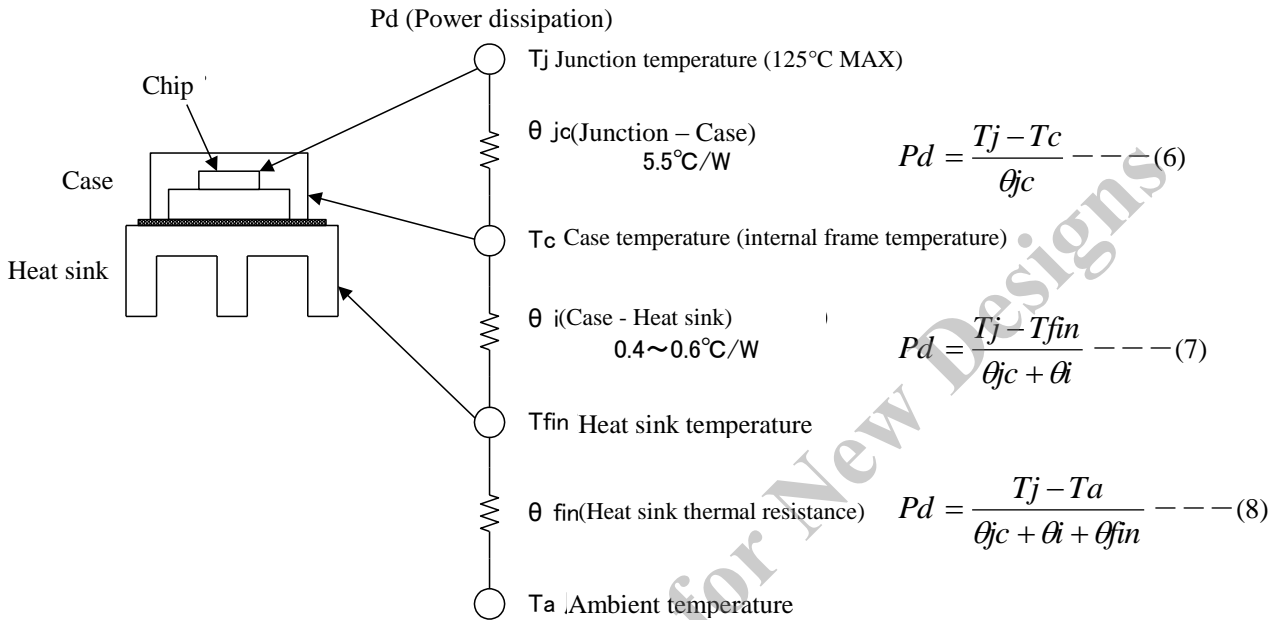
The constants of peripheral components should be properly selected according to the applications of each regulator I.C.



**4-5a Thermal Design (SI-8001FFE)**

**4-5a-1 Calculation of Heat Dissipation**

The relation among the power dissipation Pd of regulator, junction temperature Tj, case temperature Tc, heat sink temperature Tfin and ambient temperature Ta is as follows:



The  $T_{jMAX}$  is an inherent value for each product, therefore it must be strictly observed.

For this purpose, it is required to design the heat sink in compliance with  $P_{dMAX}$ ,  $T_{aMAX}$  (determination of  $\theta_{fin}$ ).

The heat derating graphically describes this relation.

The designing of the heat sink is carried out by the following procedure:

- 1) The maximum ambient temperature  $T_{aMAX}$  in the set is obtained.
- 2) The maximum power dissipation  $P_{dMAX}$  is obtained.

$$P_d = V_{OUT} \cdot I_o \left( \frac{100}{\eta x} - 1 \right) - V_f \cdot I_o \left( 1 - \frac{V_{OUT}}{V_{IN}} \right) \quad \text{--- (9)}$$

\*  $\eta x$ = efficiency (%),  $V_f$ = diode forward voltage

- 3) The size of heat sink is determined from the intersection of the heat derating.

The required thermal resistance of the heat sink can be also calculated. The thermal resistance required for the heat sink is obtained by the following equation:

$$\theta_i + \theta_{fin} = \frac{T_j - T_a}{P_d} - \theta_{jc} \quad \text{--- (10)}$$

An example of heat calculation for using SI-8001FFE under the conditions of  $V_{IN} = 15V$ ,  $V_o = 5V$ ,  $I_o = 3A$  and  $T_a = 85^\circ C$  is shown below. Where efficiency  $\eta = 80\%$ ,  $V_f = 0.5V$  from the typical characteristics,

$$P_d = 5 \times 3 \times \left( \frac{100}{80} - 1 \right) - 0.5 \times 3 \times \left( 1 - \frac{5}{15} \right) \doteq 2.75W$$



$$\theta_i + \theta_{fin} = \frac{125 - 85}{2.75} - 5.5 \doteq 9.05^\circ \text{C/W}$$

As a result, the heat sink with the thermal resistance of 9°C/W or less is required.

As described above, the heat sink is determined, but the derating of 10 - 20% or more is used. Actually, heat dissipation effect significantly changes depending on the difference in component mounting. Therefore, heat sink temperature or case temperature should be checked with the heat sink mounted.

The maximum rating Tjmax of SI-8001FFE is 150°C, however, the thermal protection circuit may operate at 130°C or higher, therefore, a thermal design at Tjmax<125°C is recommended.

**4-5-2 Installation to Heat sink**

Selection of silicon grease

When the SI-8000FFE is installed to the heat sink, silicon grease should be thinly and evenly coated between the IC and heat sink. Without coating, thermal resistance  $\theta_i$  is significantly increased because of contact failure due to micro concavity/convexity between the backside of the IC and the surface of the heat sink to accelerate the heating of the IC, resulting in shorter life of the IC. In some kind of silicon grease to be used, oil component may be separated to penetrate into the IC, resulting in the deformation of packages or the adverse effect on built-in elements. Any other silicon grease than one based on the modified silicon oil shall not be used.

The recommended silicon greases are as follows:

Sanken’s recommended silicon greases:

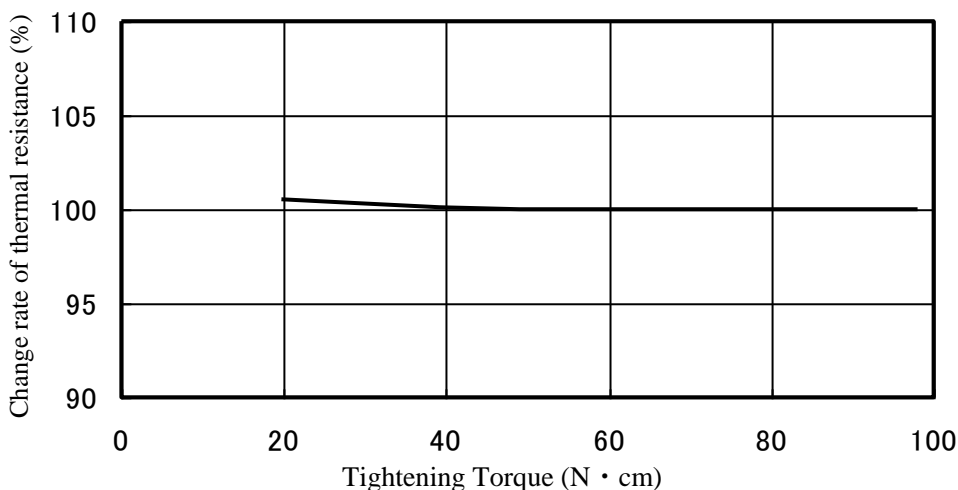
<u>Types</u>	<u>Suppliers</u>
G746	Shin-Etsu Chemical Co., Ltd.
SC102	Toray Silicone Co., Ltd.
YG6260	Momentive Performance Materials Inc.

Tightening torque of fixing screws

In order to keep the thermal resistance between the IC and the heat sink at low level without damaging the IC package, it is necessary to control the torque of fixing screws in a proper way.

Even if silicon grease is coated, the thermal resistance  $\theta_i$  increases if the tightening torque is not enough.

For the SI-8001FFE, 58.8 – 68.6N cm (6.0 – 7.0 kg cm) are recommended.



- \* 1. The change rate of thermal resistance in the case that  $58.8\text{N}\cdot\text{cm}(6\text{kg}\cdot\text{cm})$  is expressed as 100% is shown above.
- \* 2. The silicon grease G746 shall be used.

## ●4-5b Thermal Design (surface mount type SI-8001FDE)

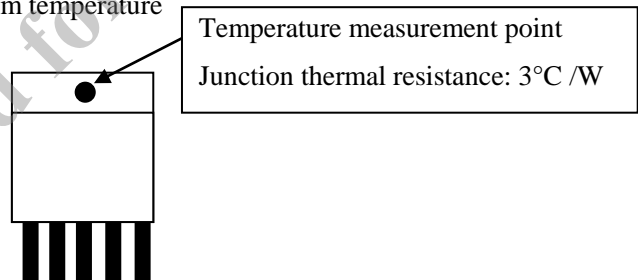
### 4-5b-1 Calculation of Heat Dissipation

Surface mount type SI-8001FDE is the same as the previously described lead insertion type in thermal design at junction temperature of  $T_{j\text{max}}$  or lower, but in the case of the surface mounting type, the heat is dissipated toward the copper foil on the mounting board, therefore the thermal design should be made in consideration of copper foil area, board material and number of copper foil layers.

The stem part of the backside of the SI-8001FDE is connected with pin 3 (GND) by the inner frame and heat dissipation performance is improved by taking the larger GND pattern which is directly connected with the stem part.

In order to confirm the junction temperature, the temperature of the stem spot shown below should be measured to calculate the temperature by the following equation.

$$T_j = T_c + P_d \times 3^\circ\text{C}/\text{W} \quad * T_c = \text{Actually measured stem temperature}$$



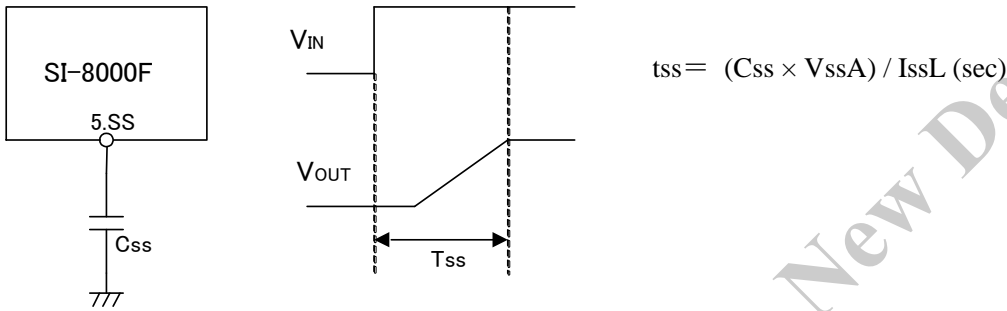
# 5. Application

## ●5-1 Soft-start

If a capacitor is connected to the 5th pin, soft-start is applied when input voltage is turned on. Vout is co-related to the charging voltage of C<sub>SS</sub> and rises. Therefore, the soft-start time can be calculated by the time constant of charging to C<sub>SS</sub>.

The capacitor C<sub>SS</sub> is intended to control the rise- time by controlling the OFF period of the PWM control, and the rise- time t<sub>SS</sub> is generally derived by the following equation.

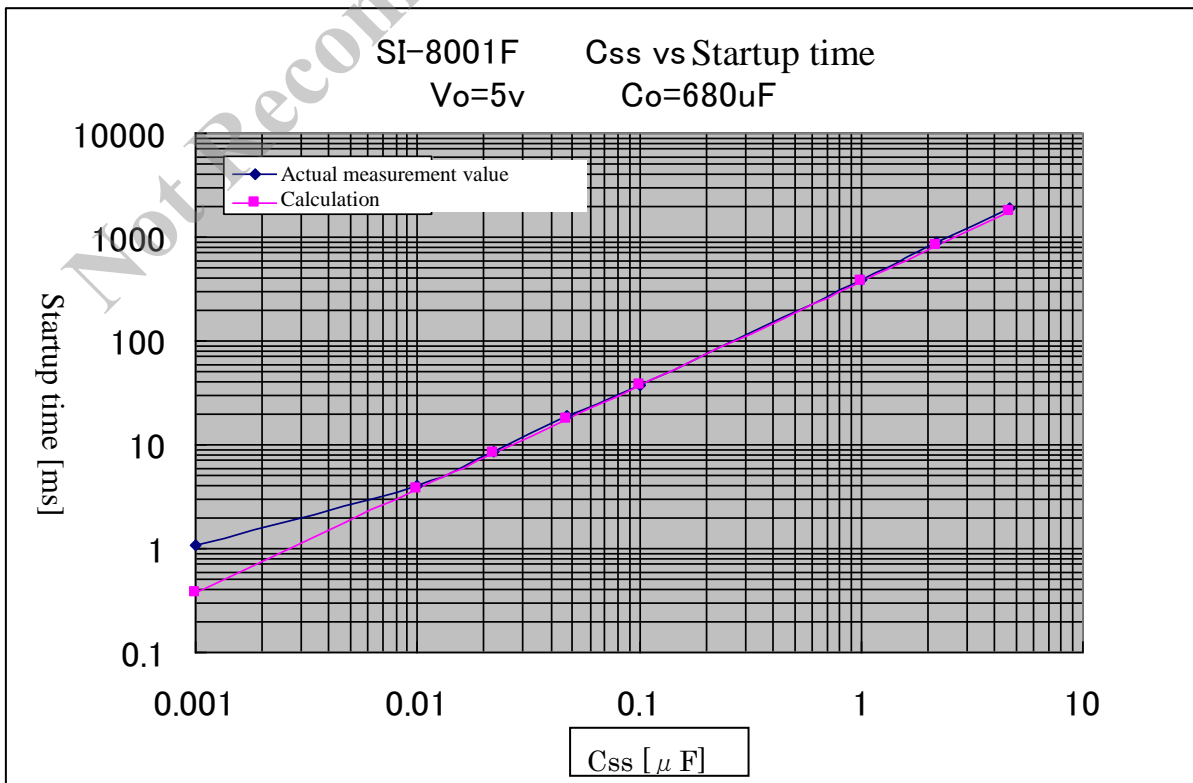
When not using the soft start function, open the 5th pin.



The SS pin is pulled up (3.7vTYP) to the IC internal power source, therefore, it is unable to input external voltage.

When the capacity of C<sub>SS</sub> is enlarged, after V<sub>in</sub>OFF, discharge-time of C<sub>SS</sub> becomes slow.

It is recommended to use the C<sub>SS</sub> at 10uF or less.



With the  $C_{ss}$ , the reference data of the actual measurement value and the calculation are shown in the above.

If the SS pin is open or  $C_{ss}$  is extremely small, the output voltage rises at the time constant that is charged to output-capacitor by output-current that is restricted by the over-current-protection "Is".

In the graph of the above startup time, in case of  $C_{ss}=0.001\mu\text{F}$ , the time constant that is charged to output-capacitor by output-current that is restricted by the over-current-protection is dominant than the time constant of soft-start by  $C_{ss}$ .

The time constant of output voltage rising without soft-start.  $t = (C_o \times V_o) / I_s \dots \dots$  (at no-load)

\* Under the condition that a load is connected, "Is" value is subtracted by load current.

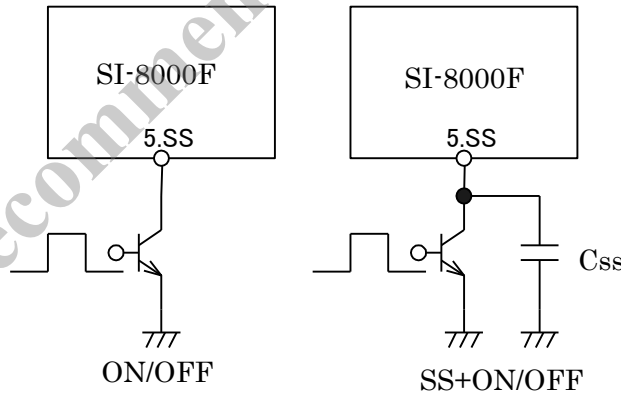
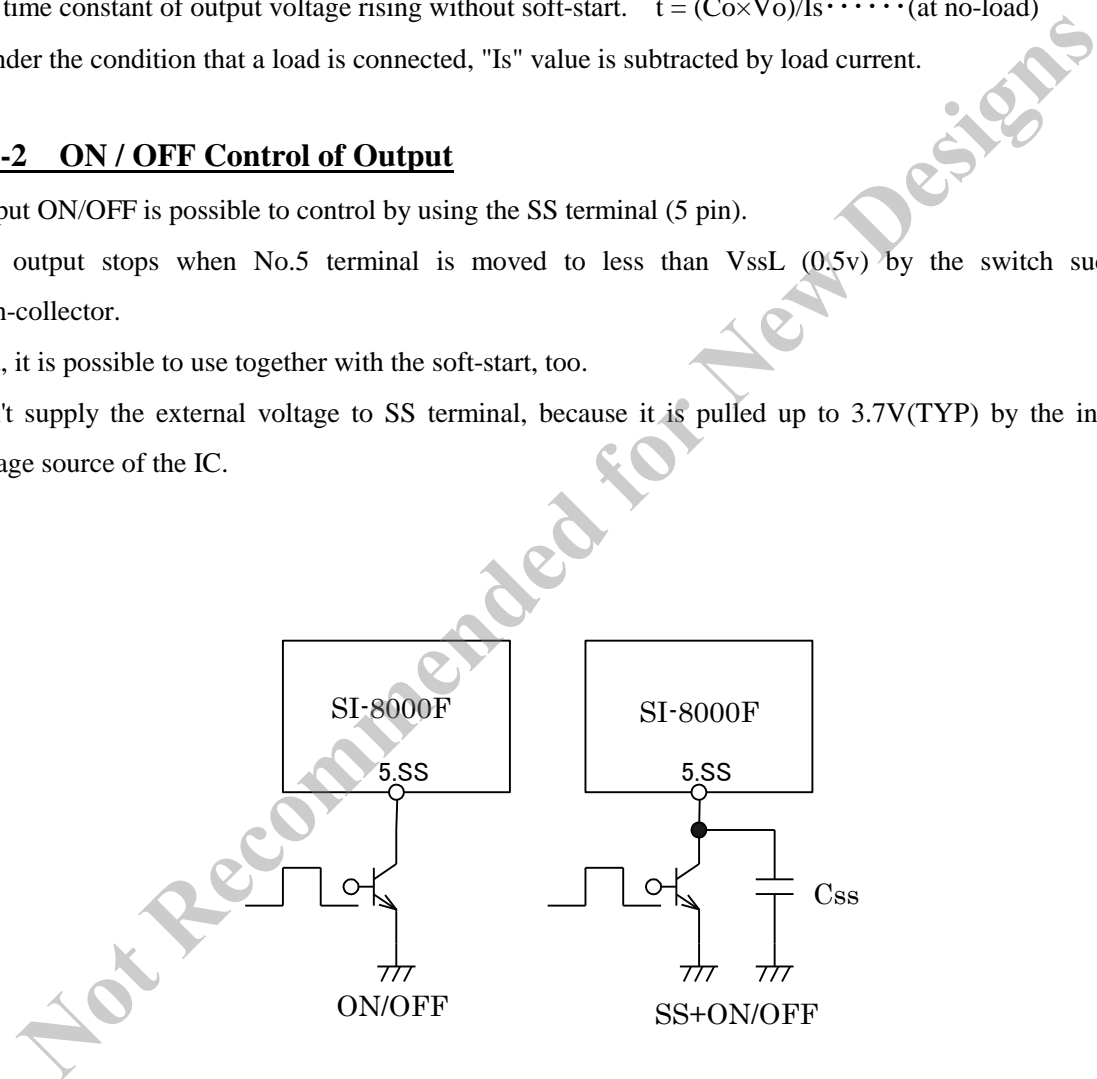
**●5-2 ON / OFF Control of Output**

Output ON/OFF is possible to control by using the SS terminal (5 pin).

The output stops when No.5 terminal is moved to less than  $V_{ssL}$  (0.5v) by the switch such as open-collector.

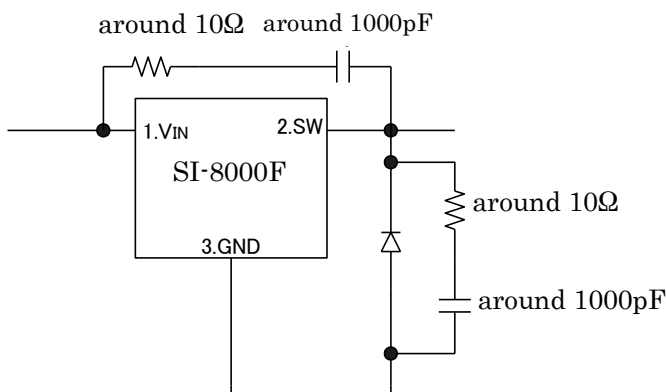
And, it is possible to use together with the soft-start, too.

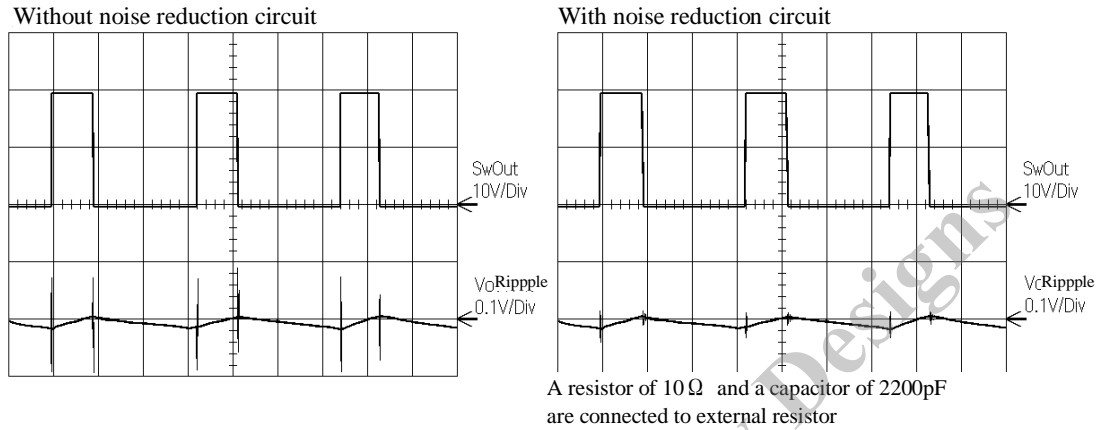
Don't supply the external voltage to SS terminal, because it is pulled up to 3.7V(TYP) by the internal voltage source of the IC.



**●5-3 Spike Noise Reduction**

In order to reduce the spike noise, it is possible to compensate the output waveform of the SI-8000F and the recovery time of the diode by a capacitor, but it should be noted that the efficiency is also slightly reduced.

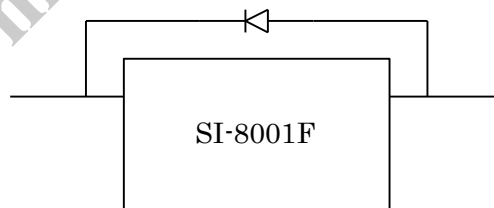




\* When the spike noise is observed with an oscilloscope, the lead wire may function as an antenna and the spike noise may be observed extremely higher than usual if the probe GND lead wire is too long. In the observation of spike noise, the probe lead wire should be as short as possible and be connected with the root of the output capacitor.

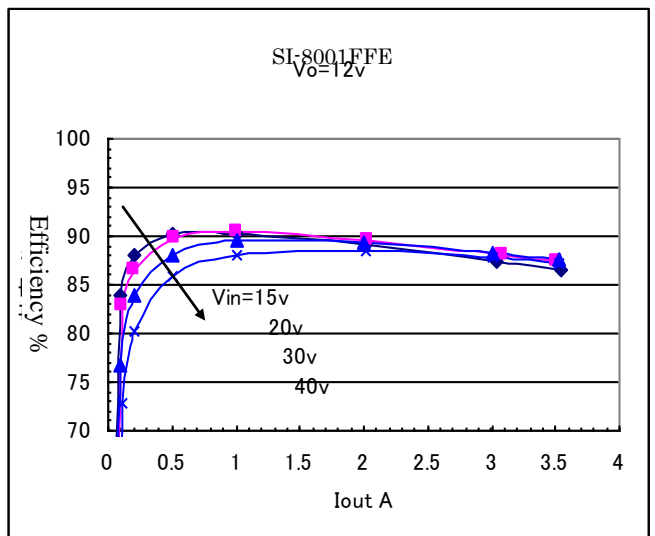
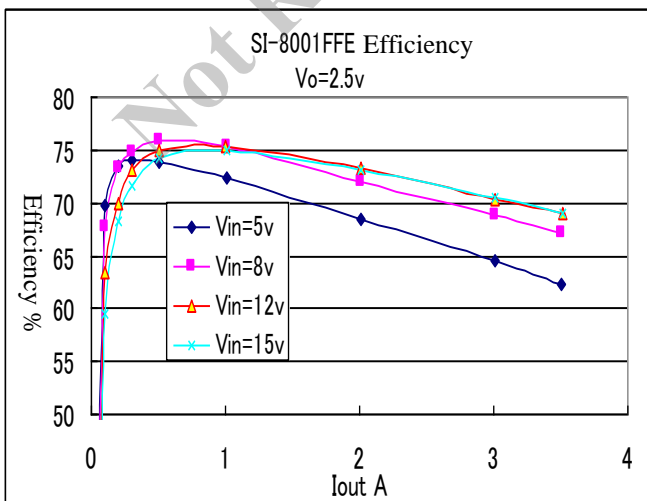
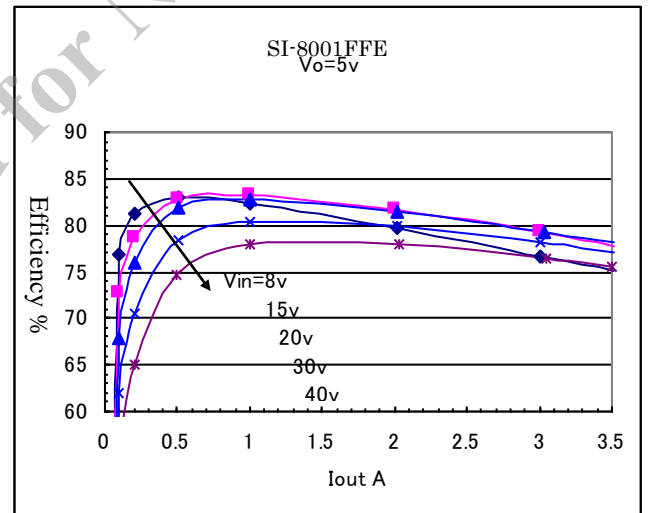
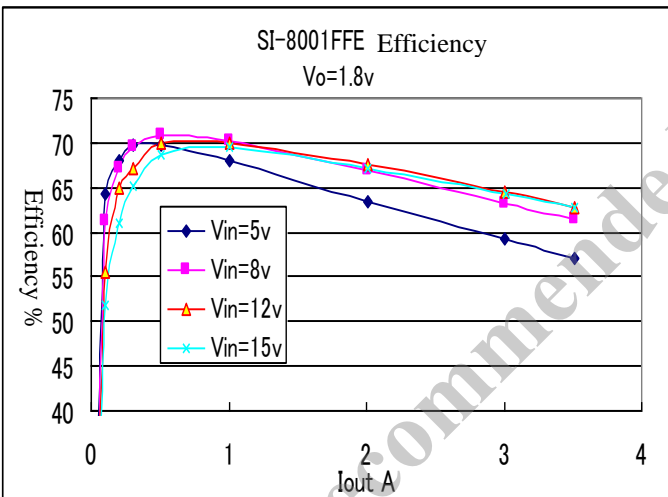
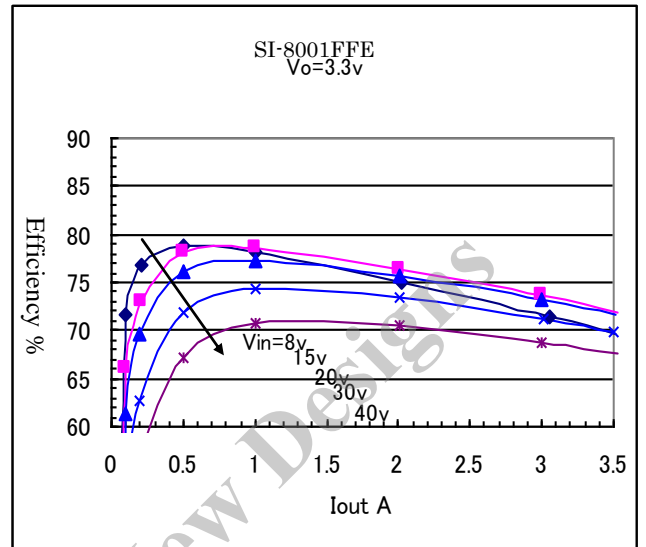
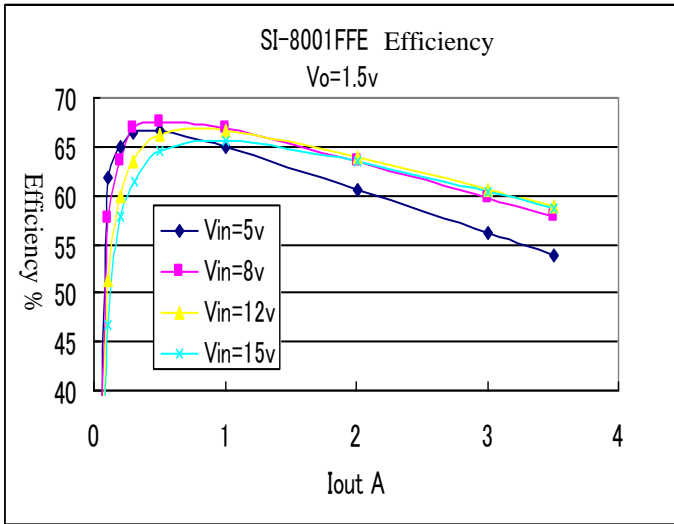
#### ●5-4 Reverse Bias Protection

A diode for reverse bias protection will be required between input and output when the output voltage is higher than the input terminal voltage, such as in battery chargers.

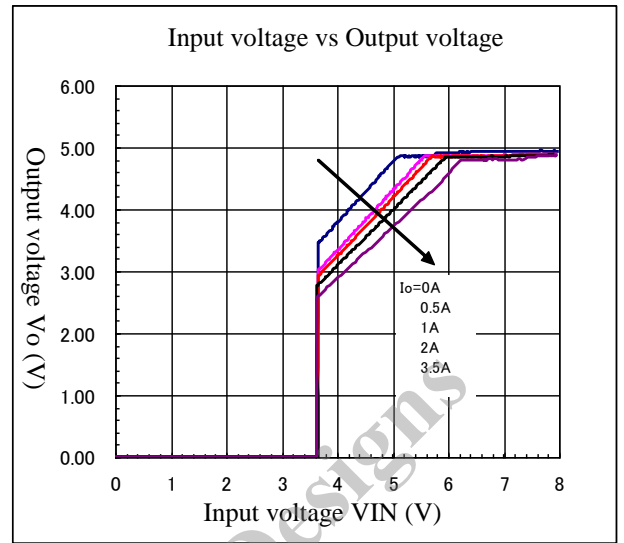
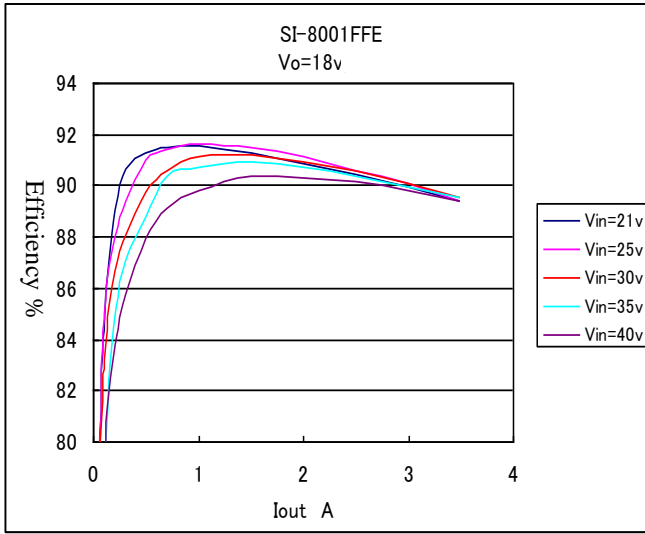


# 6. Typical Characteristics

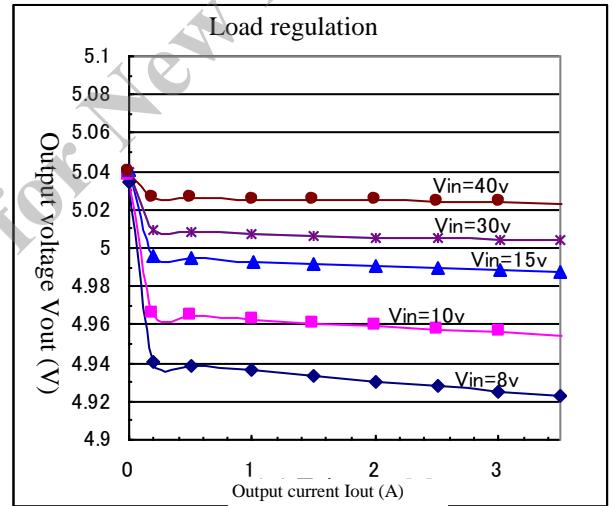
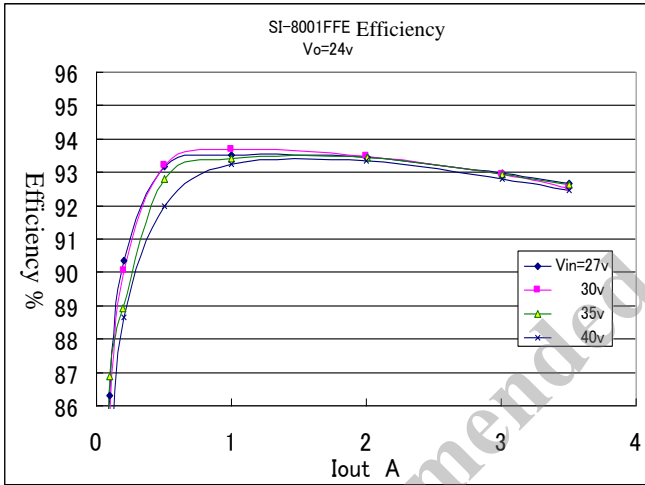
(1) Efficiency



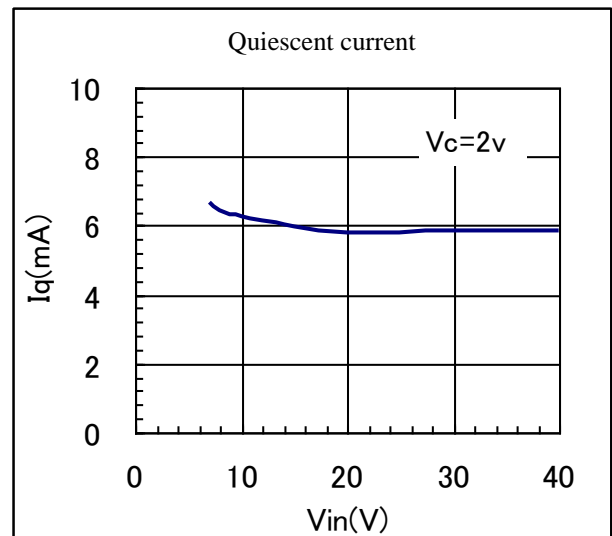
(2) Rising characteristics

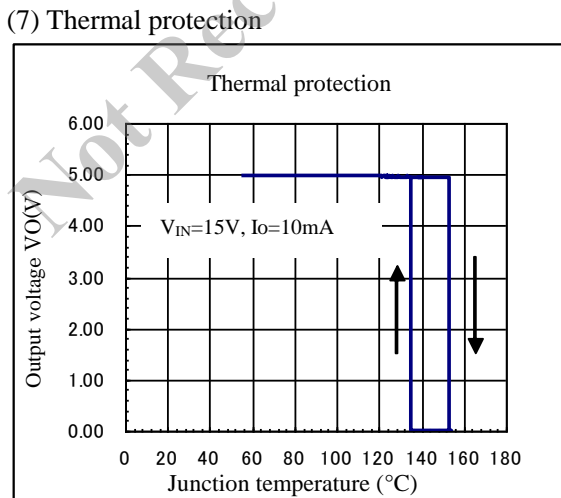
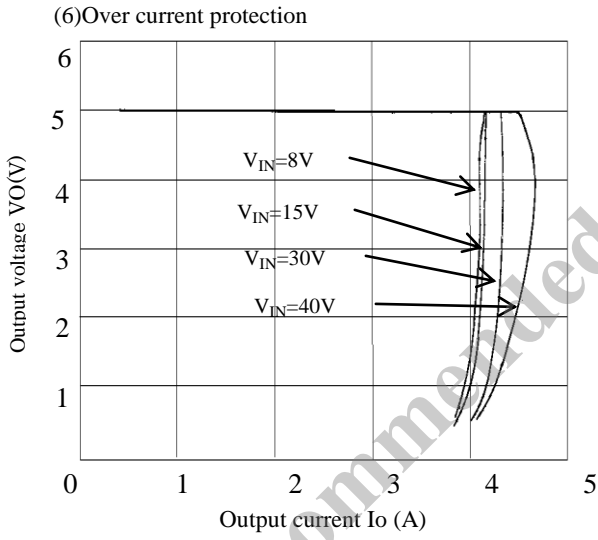
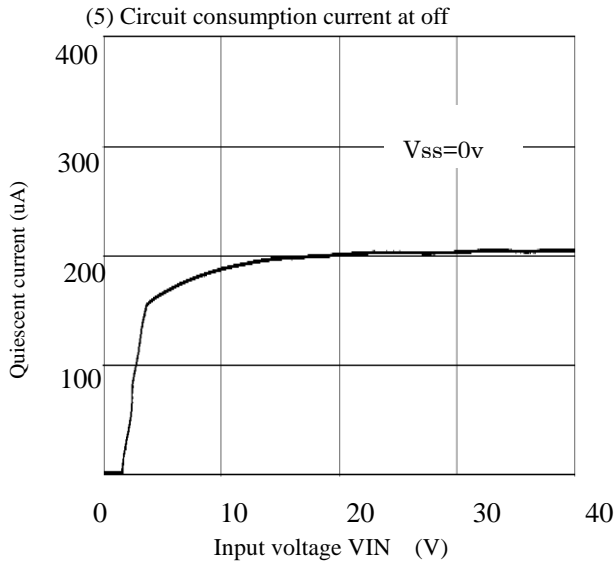


(3) Load regulation



(4) Quiescent current







## 7. Terminology

### - Jitter

It is a kind of abnormal switching operations and is a phenomenon that the switching pulse width varies in spite of the constant condition of input and output. The output ripple voltage peak width is increased when a jitter occurs.

### - Recommended Conditions

It shows the operation conditions required for maintaining normal circuit functions. It is required to meet the conditions in actual operations.

### - Absolute Maximum Ratings

It shows the destruction limits. It is required to take care so that even one item does not exceed the specified value for a moment during instantaneous or normal operation.

### - Electrical Characteristics

It is the specified characteristic value in the operation under the conditions shown in each item. If the operating conditions are different, it may be out of the specifications.

### - PWM (Pulse Width Modulation)

It is a kind of pulse modulation systems. The modulation is achieved by changing the pulse width in accordance with the variation of modulation signal waveform (the output voltage for chopper type switching regulator).

### - ESR (Equivalent Series Resistance)

It is the equivalent series resistance of a capacitor. It acts in a similar manner to the resistor series-connected to the capacitor.

#### Notice

- The contents of this description are subject to change without prior notice for improvement etc. Please make sure that any information to be used is the latest one.
- Any example of operation or circuitry described in this application note is only for reference, and we are not liable to any infringement of industrial property rights, intellectual property rights or any other rights owned by third parties resulting from such examples.
- In the event that you use any product described here in combination with other products, please review the feasibility of combination at your responsibility.
- Although we endeavor to improve the quality and reliability of our product, in the case of semi-conductor components, defects or failures which occur at a certain rate of probability are inevitable.

The user should take into adequate consideration the safety design in the equipment or the system in order to prevent accidents causing death or injury, fires, social harms etc..

- Products described here are designed to be used in the general-purpose electronic equipment (home appliances, office equipment, communication terminals, measuring equipment etc.).

If used in the equipment or system requiring super-high reliability (transport machinery and its control equipment, traffic signal control equipment, disaster/crime prevention system, various safety apparatus etc.), please consult with our sales office. Please do not use our product for the equipment requiring ultrahigh reliability (aerospace equipment, atomic control, medical equipment for life support etc.) without our written consent.

- The products described here are not of radiation proof type.
- The contents of this brochure shall not be transcribed nor copied without our written consent.